

Shalom

July, 2025



Seek the LORD and His strength;
Seek His face evermore!

I Chronicles 16:11

'Kizuna' the old folks home

This was our third time visiting. Pastor RIE from Osaka, Sachiko from Iwate, Mugi from Saitama went as the Hokkaido mission team.

We took time teaching work out, singing and time fellowshiping they brought all sorts of snacks from a hidden room and we ate together. There are many old folks over 90 years old but they are all energetic.



We went to Nibutani

This area is where the Ainu people live. They showed us how they make strings from Attushi(bark from the tree and weave cloth)



Take the bark of the tree
and soak in water



tear apart the fiber



make it like a string



Then make it into thread
and weave it into a belt



~Ainu Language~

Iyairaikere : Thank you

Pirika : Beautiful Cute

Hinna hinna : Delicious



Barbeque with the Tomato farmers



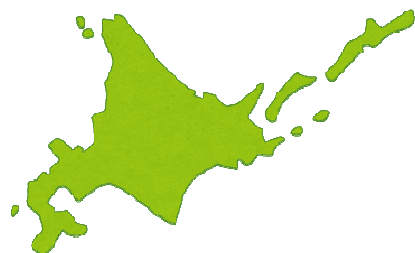
They took us fishing and deep fried the fish we caught to eat.



Toru and Chiho the owner of the inn in Furano made delicious breakfast
We prayed blessings before we left.

God touched Chiho's heart that she was shedding tears.

Starting that day. We are sending them the daily scripture sowing the seed.
We believe that God will make fruit grow in their hearts



We were able to have good fellowship time with the old folks that Pastor RIE teaches work out to at the Hattori Ryokuchi Park.



AMI JAPAN Official YouTube Chanal

We are aiming for 1000 followers !

Please follow

AMI JAPAN Official YouTube
AMI JAPAN Official Pastor RIE

Pastor Alph Lukau
Official YouTube of Japan



アルフ・ルカウ牧師 日本公式
Youtube (Pastor Alph Lukau Japan)

**We declare and decree that we are trained by the Lord,
spiritually and physically in the name of Jesus!!**

Daily declaration from the year 2025 !

©I am blessed !!

©I am receiving the favor of God !!

**Who executes justice for the oppressed,
Who gives food to the hungry.
The LORD gives freedom to the prisoners.**

Psalms146:7

- May the path be opened to the people that hope to escape Gaza,
and may the people be freed from the control of Hamas.

- May there be salvation to the ones still left in Gaza,
the ones that fled from Gaza and to all the people.

- May the Hamas comply to disarmament and free the hostages,
and may the war come to and end as soon as possible.

We would like to give a report on the activity of Peace Winds Japan that AMI JAPAN has been supporting, as we have received report.

Activities of the year 2024

ARROWS the flying medical searching team' project Activity period: 2019~

To clear the Logistic issue faced in the support of Noto Peninsula earthquake, Adding to the training with the medical and Aviation department, periodic training and training with public organizations were done, reinforced cooperations and strengthened connections, making it possible to take actions quickly during the disaster national and internationally.

Disaster support Domestic case 1 (Noto Peninsula heavy rain)

Over Seas cases 4 (Taiwan East Cost Earthquake, Vietnam heavy rain, Flood in Mozambique, Wild fire in Los Angeles) We sent teams 5 times in total.

Year 2024 started with the emergency support of Noto Peninsula earthquake that occurred on the 1st of January, and it became the year of a turning point for ARROWS the flying medical searching team which is in their fifth year.

We think it can be expressed as 'a year of trials'.

We think that the Noto Peninsula earthquake support was the one we were able to meet the vision, ' **Save as many lives, as fast as possible** ' that we have been setting as our vision from when we started.

Fortunately, many have come to know us and we are receiving many support.

Other groups call out to us during the joint training and seminars.

Numbers of register staff (Roster) has increased to double.

The team has grown. Most of all through our activities, our team has gain trust, which will help our further activities carry forward.

This year has been a year of breakthrough for us.



Noto Peninsula Earthquake Pet Support

Necessary support to where it is needed

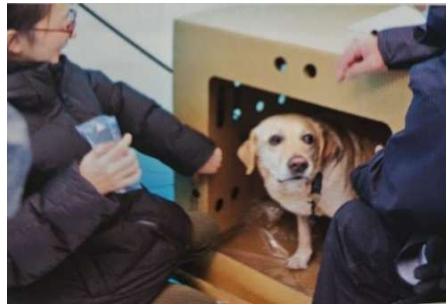
The Magnitude 7.6 earthquake that hit Noto Peninsula in Ishikawa prefecture on the 1st of January 2024, not only caused damage to humans but also caused big damage to animals, like dogs cats and birds.

Peace Doggy sent pet emergency support team to the location from January 8th, a week after the earthquake.

The base was in Suzu city, the north tip of Noto peninsula.

Starting by providing food and pet sheets, beginning evacuation centers where you can stay with your pets or taking care of the pets during the day. trimming support and other activities.

Pets are also important families' that is why we have started



Request for Pastor support offerings co operation

Thank you for your continuing love support.

God is speaking to us through the condition of the world and Japan.

I (God) want you to return to me I love you

But if there is no one to tell, people will not be able to know the love of God
Pastor RIE is taking action risking her whole life to tell you that God loves you,
and that there is the salvation through the cross of Jesus prepared for you.

That God wants you to accept it and return to Him!!

Please lend us your hand to cheer and support the activities of Pastor RIE,
that is sharing the love of God, going all over Japan without charge,
to where ever anyone thinks, I want to know God! I want to receive the love !

Let us bring revival to Japan with Pastor RIE , in this end time!!

Waiting for your co operation on Pastor support offerings.

◆ OFFERING INFORMATIONS ◆

Offering through credit cards

PayPal

<http://paypal.me/aimjapan>



【Request】

When offering through PayPal for supporting the Noto Peninsula earthquake, or to support the Pastor, please add the below letters to the message

If offering to support (S)

If offering to support the Pastor (R)

Thank you always for your love offerings